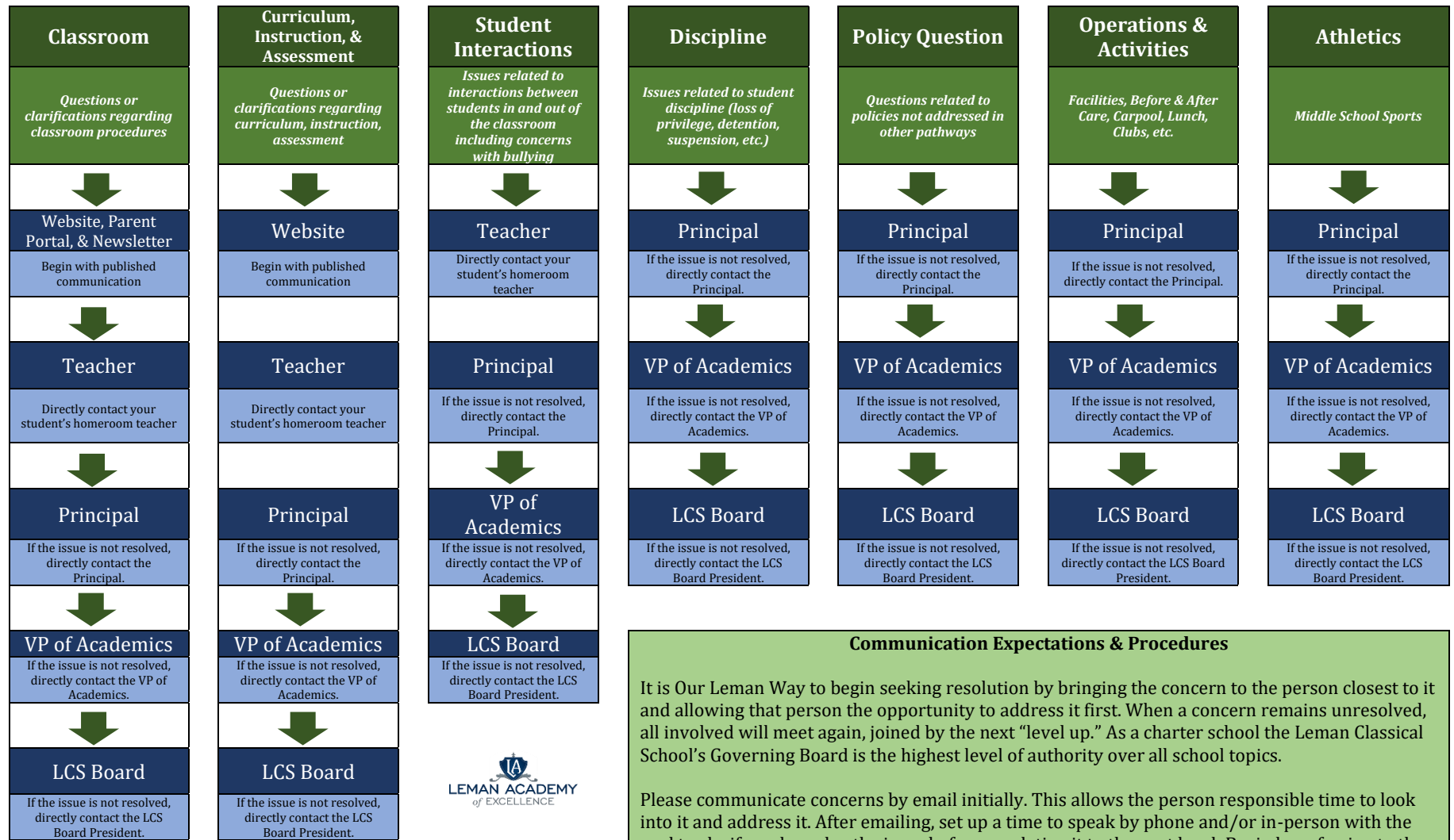


Purpose: Lemman Academy of Excellence values trust-building, proactive communication, and a solution-oriented focus. This tool exists as a user-friendly visual to promote unity, clarity, and quality in communication, to increase the organization’s efficiency and effectiveness for the good of our scholars and school community.



COMMUNICATION PATHWAYS
Adopted December, 2019

Communication Expectations & Procedures

It is Our Lemman Way to begin seeking resolution by bringing the concern to the person closest to it and allowing that person the opportunity to address it first. When a concern remains unresolved, all involved will meet again, joined by the next “level up.” As a charter school the Lemman Classical School’s Governing Board is the highest level of authority over all school topics.

Please communicate concerns by email initially. This allows the person responsible time to look into it and address it. After emailing, set up a time to speak by phone and/or in-person with the goal to clarify and resolve the issue before escalating it to the next level. Begin by referring to the School Directory on the school website. When in doubt, call 720-767-1600; our Office Staff will direct you to your pathway. Expect a brief email response within 48 hours, understanding that resolution may take longer.

Strategic Importance: Every stakeholder is valued as an important part of the Lemman Academy community in Parker, CO. As we honor the parameters of each person’s role, trust is cultivated, concerns resolved, and growth is realized. As a result, we fulfill Lemman Academy’s unifying mission and vision together.